

Risk Assessment using IWRAP MK2 Course

At Tokyo Denki University, Senju, Tokyo, Japan

The course will be held for the purpose of providing information and knowledge that are concerned with IWRAP (IALA Waterway Risk Assessment Program tool) to participants by conducting a training workshop and introducing a case study utilized in Japan.

IWRAP is method for quantitatively assessing the potential risk of collision or grounding in a given area at marine traffic flow, and it is one of the IALA Risk Management Tool Box endorsed on the 88th session of the IMO Maritime Safety Committee in

BACKGROUND

It has been around 7 years since the starting utilization of IWRAP. In order to utilize it effectively in each country, it is important to train expert technician to potentially utilize it in the future. The seminar will be *salutary* opportunity for all of the participants.

OBJECTIVE

The objective is that each participant will definitely be able to utilize it effectively after returning to their own country by conducting training workshop on foundation and practice of IWRAP. With this objective in mind we will formulate a program.

ATTENDANCE

The number of participant is scheduled around 20 people.

REGISTRATION FEE

The fee for the seminar is € 600

VENUE

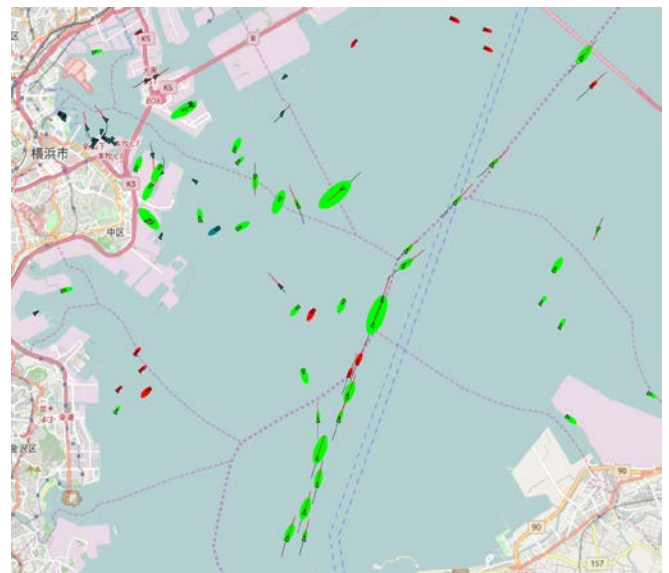
The seminar will be held at the Tokyo Denki University (The 100th anniversary hall in the building No. 1 of Tokyo Senju campus).

○Tokyo Denki University

Since its inception in 1907, Tokyo Denki University has educated engineer for over 110 years since the school was founded, and the school has history and achievement producing a large number of engineer to the world.

Furthermore, the school is also active concerning international exchange, current number of partner university in overseas is a total of 29 universities and research institutes.

Tokyo Senju campus which holds the seminar was opened in 2012. The campus has advanced and substantial facilities. School officials, students (about 10,000 people) and university facilities users can use the campus with peace of mind by superior security system.





The campus is a convenient location and has also a good access to transportation.

<TOKYO DENKI UNIVERSITY Tokyo Senju Campus>

Address: 5 Senju Asahi-cho, Adachi-ku, Tokyo 120-8551

Tel: +81-3-5284-5208

<http://www.dendai.ac.jp/access/>

○Senju

Senju flourished as a post town on highway improved for connecting between Edo (the latter-day Tokyo) and each city in Edo era (1603 - 1867). Senju was developed as useful location for transportation, because it was intersection of highway and also junction of river. Adachi-ku including Senju is assessed as a good location for education, therefore there are 5 universities in Adachi-ku, Furthermore, Adachi-ku has many historic spot as a Souji-ji temple (Nishiaraidaiishi), and it is city blessed with history and culture.

HOTEL AND TRANSPORTATION

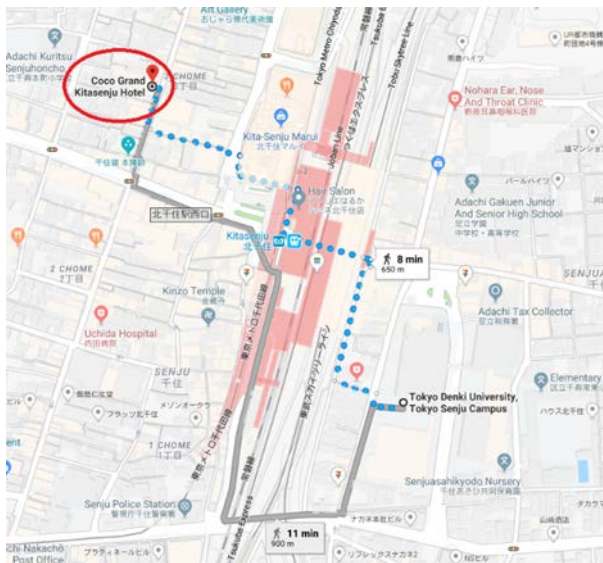
Participants should book a hotel by themselves. We recommend the following hotels considering access to the seminar venue.

1. HOTEL COCO GRAND KITASENJU

Economy single room: 9,800 JPY

Standard single room: 10,300 JPY

Breakfast: Included



Distance to seminar venue: 0.6 km

Address: 3-40-2 Senju, Adachi-ku, Tokyo 120-0034

<http://www.cocogrand.co.jp>

2. AKIHABARA WASHINGTON HOTEL

Single room: 15,544 JPY

Breakfast: 1,620 JPY

Distance to seminar venue: 7.0 km

Distance to Akihabara station: 0.2 km

It takes around 10 minutes by train from Akihabara to Kitasenju.

Address: 1-8-3 Sakuma-cho, Kanda, Chiyoda-ku, Tokyo 101-0025

<http://akihabara.washington-hotels.jp/>

3. remm AKIHABARA

Single room: 21,800 JPY

Breakfast: 1,300 JPY

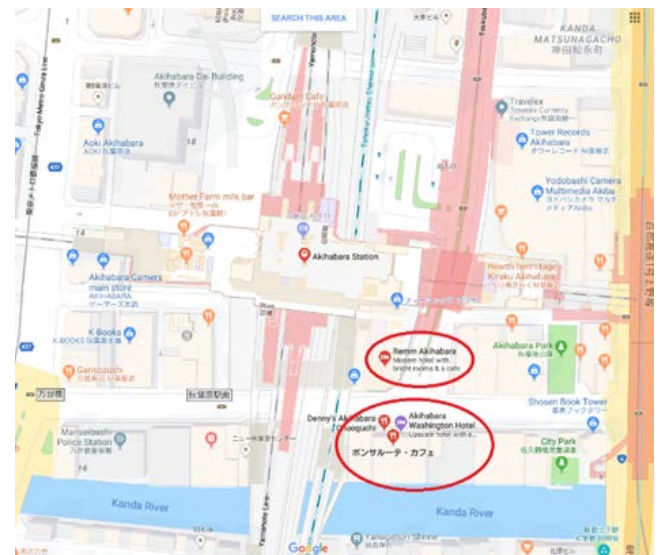
Distance to seminar venue: 7.0 km

Distance to Akihabara station: 0.2 km

It takes around 10 minutes by train from Akihabara to Kitasenju.

Address: 1-6-5 Sakuma-cho, Kanda, Chiyoda-ku, Tokyo 101-0025

<http://www-a.global.hankyu-hotel.com/remm-akihabara/>



10, rue des Gaudines - 78100 Saint Germain en Laye, France
Tél. +33 (0)1 34 51 70 01 - Fax +33 (0)1 34 51 82 05 - contact@iala-ism.org
www.iala-ism.org

International Association of Marine Aids to Navigation and Lighthouse Authorities
Association Internationale de Signalisation Maritime



PROVISIONAL PROGRAMME

Day 1 - Monday 1 October

Session 1

Opening Speech by Japan

Opening Speech by the Dean

Introduction to IALA, WWA and SOLAS obligations

Session 2

Introduction to the IALA Risk Management Toolbox

Regional Case Study using the IALA Risk Management Toolbox

Installation of the IWRAP Mk2 Software

Evening Welcome reception (Hosted by JANA, Tokyo Denki University)

Day 2 - Tuesday 2. October

Session 3

Introduction to SIRA

Introduction to PAWSA

Session 4

IWRAP Mk2 Principles and development

IWRAP Mk2 Exercises

Evening Welcome dinner (Hosted by JANA, YAKATABUNE in the Sumida River)

Day 3 - Wednesday 3. October

Session 5

Examples of case studies of IWRAP Mk2 models

IWRAP model development with AIS data

Session 6

Continued development of an IWRAP model

Day 4 - Thursday 4 October

Session 7

Use of simulation in Risk Assessment

Continued development of an IWRAP model

Session 8

Open forum discussion on the IALA Risk Assessment Toolbox

Introduction, IALA Risk Management Toolbox

Introduction to IWRAP

Case study Tokyo Bay using IWRAP

Discussion

Conclusions

Evening Farewell dinner (Hosted by JANA, Asakusa Tempura)

Day 5 - Friday 5. October

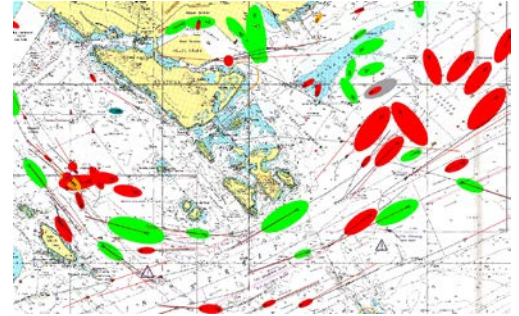
Session 9

Discussion on complimentary use of the IALA Risk Management Tools

Ceremony - delivery of Certificates

Closing speech Japan

Closing speech by the Dean





RISK ASSESSMENT USING IWRAP MK2 COURSE
At Tokyo Denki University, Senju, Tokyo
Japan

Participant's details

Surname (family name):
First name (given name):
Title (Mr. /Mrs. /Dr., etc.):
Organisation or company:
Address:
Country:
Phone (incl. country code):
Mobile (incl. country code):
E-mail:

Payment details

by enclosed cheque or bank draft in EUROS
by VISA or MASTERCARD
No:
Expiry date:
Holder's name:
Cryptogram (3 figures in the back):
Total to be charged:
Signature
by bank transfer on receipt of an invoice
Other requirements (please specify):

I agree to my contact details being provided
in the final report of the seminar:

Yes No

I need an invitation letter for visa purposes:

Yes No

I will be accompanied by:

Form lines for accompaniment details

CANCELLATION POLICY

All cancellations must be sent by e-mail to
academy@iala-aism.org

A refund in full of the registration fee will only be provided
if notification is given at least one week prior to the event.
Otherwise, a cancellation charge of 50% will be applied.
Name changes will be accepted.

In case of a no-show, 100% of the registration fee
will be charged.